

Flute

PHANTOM OF THE OPERA

LOOK DOWN

Phantom ♩ = 152

4

f

7

2 3

10

Look Down ♩ = 84

15

20

Clarinet in B \flat

PHANTOM OF THE OPERA

LOOK DOWN

Phantom $\text{♩} = 152$

4

f

Musical notation for measures 1-4 of 'Phantom'. Measure 1 is a whole rest. Measures 2-4 contain a rhythmic pattern of eighth notes and quarter notes, starting with a forte (*f*) dynamic. The key signature has one flat and the time signature is 4/4.

7

Musical notation for measures 5-7 of 'Phantom'. Measure 5 is a whole rest. Measures 6-7 continue the rhythmic pattern from the previous section.

2 3

10

Look Down $\text{♩} = 84$

Musical notation for measures 8-10 of 'Look Down'. Measure 8 is a whole rest. Measures 9-10 feature a series of chords with accents (>) and a fermata over the final chord. The tempo is marked as 84.

15

rit.

Musical notation for measures 11-15 of 'Look Down'. Measures 11-14 feature chords with accents (>). Measure 15 begins with a ritardando (rit.) marking and contains a descending eighth-note scale.

20

Musical notation for measures 16-20 of 'Look Down'. Measures 16-19 feature a descending eighth-note scale. Measure 20 is a whole rest.

Alto Sax.

PHANTOM OF THE OPERA

LOOK DOWN

Phantom ♩ = 152

Musical notation for measures 1-5 of 'Phantom'. The piece is in 4/4 time. Measures 1 and 3 contain whole notes with a forte (*f*) dynamic. Measures 2 and 4 contain eighth-note chords with accents. Measure 5 contains a quarter-note melody with a forte (*f*) dynamic.

Musical notation for measures 6-9 of 'Phantom'. Measures 6 and 8 contain eighth-note chords with accents. Measures 7 and 9 contain quarter-note melodies with accents.

2 3

10 **Look Down** ♩ = 84

Musical notation for measures 10-15 of 'Look Down'. The piece is in 4/4 time. Measure 10 contains a quarter rest. Measures 11-15 contain eighth-note chords with accents.

Musical notation for measures 16-19 of 'Look Down'. Measures 16-18 contain eighth-note chords with accents. Measure 19 contains a quarter-note melody with a *rit.* (ritardando) marking and a dotted line indicating a deceleration.

Musical notation for measures 20-23 of 'Look Down'. Measures 20-22 contain quarter notes with accents. Measure 23 contains a quarter rest.

Tenor Sax.

PHANTOM OF THE OPERA

LOOK DOWN

f Phantom ♩ = 152

5

2 3

10 Look Down ♩ = 84

16 rit.

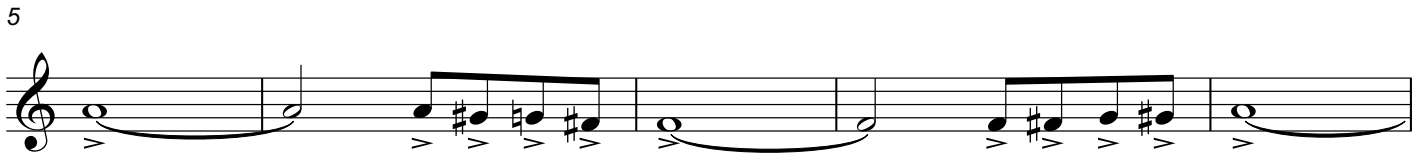
20

Baritone Sax.

PHANTOM OF THE OPERA

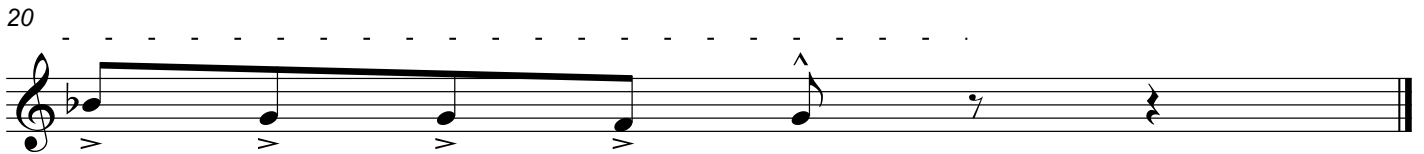
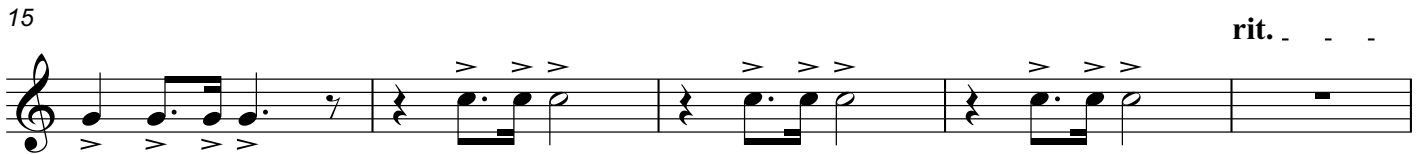
LOOK DOWN

Phantom ♩ = 152



2 3

10 Look Down ♩ = 84



Horn in F

PHANTOM OF THE OPERA

LOOK DOWN

Phantom ♩ = 152

Musical notation for the first system of the 'Phantom' section, measures 1-5. The key signature is two flats (B-flat and E-flat), and the time signature is 4/4. The music begins with a dynamic marking of *f* (forte). The first measure contains a half note with an accent (>) and a fermata. The following measures contain eighth and sixteenth notes with accents (>). The section concludes with a dynamic marking of *f*.

6

Musical notation for the second system of the 'Phantom' section, measures 6-9. The music continues with eighth and sixteenth notes, including rests and accents (>).

2 3

10

Look Down ♩ = 84

Musical notation for the first system of the 'Look Down' section, measures 10-15. The key signature remains two flats. The music starts with a quarter rest, followed by a series of eighth and sixteenth notes with accents (>). A double bar line is present at the beginning of the system.

16

rit.

Musical notation for the second system of the 'Look Down' section, measures 16-19. The music features eighth and sixteenth notes with accents (>). A *rit.* (ritardando) marking is indicated above the staff with a dotted line.

20

Musical notation for the third system of the 'Look Down' section, measures 20-21. The music consists of a few notes with accents (>) and a final quarter rest.

Trumpet in B \flat

PHANTOM OF THE OPERA

LOOK DOWN

Phantom $\text{♩} = 152$

1

5

2 3

Look Down $\text{♩} = 84$

10

15 rit.

20

Trombone

PHANTOM OF THE OPERA

LOOK DOWN

Phantom ♩ = 152

f

5

2 3

10

Look Down ♩ = 84

16

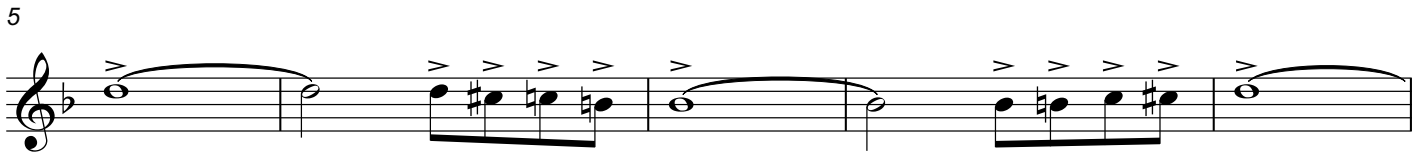
rit.

20

PHANTOM OF THE OPERA

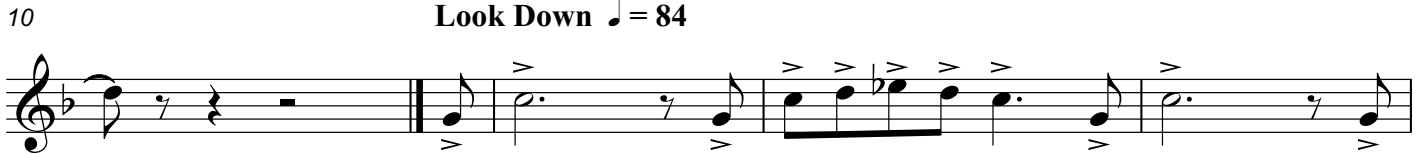
LOOK DOWN

Phantom ♩ = 152



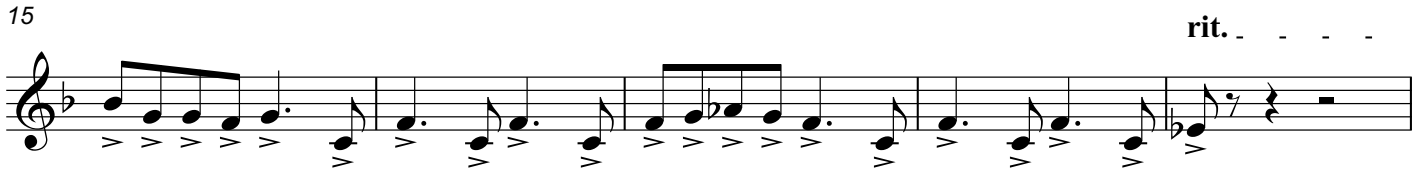
5

3



10

Look Down ♩ = 84



15

rit.



20

Baritone (B.C.)

PHANTOM OF THE OPERA

LOOK DOWN

Phantom ♩ = 152

Musical notation for the first system, measures 1-10. The key signature is two flats (B-flat and E-flat), and the time signature is 4/4. The music features a series of eighth-note patterns with slurs and accents. A dynamic marking of *f* (forte) is placed below the first measure.

11 Look Down ♩ = 84

Musical notation for the second system, measures 11-16. The key signature remains two flats, and the time signature is 4/4. The music consists of eighth-note patterns with slurs and accents.

2
17

rit.

3

Musical notation for the third system, measures 17-19. The key signature remains two flats, and the time signature is 4/4. The music features eighth-note patterns with slurs and accents. A *rit.* (ritardando) marking is placed above the first measure of this system, with a dashed line extending across the system.

Tuba

PHANTOM OF THE OPERA

LOOK DOWN

Phantom ♩ = 152

1

5

2

10

Look Down ♩ = 84

3

15

rit. . . .

4

20

5